

# the pelligon

A SPACE TO BE SEEN



# A dramatic glass-vaulted destination in the heart of Canary Wharf



The Pelligon, a César Pelli masterpiece, rises as a luminary venue in Canary Wharf, where a soaring glass dome and cascading natural light create a backdrop for up to 1,000 guests. This space—complete with a hovering mezzanine and a serene waterside terrace—adapts with elegance for any event, from vibrant conferences to lavish celebrations.





the pelliger  
a space for  
the pelliger

the pelliger



# About us



A versatile venue on the Canary Wharf riverfront made of glass and light, The Pelligon is a site to be seen. Designed by renowned architect César Pelli as the sister to New York's Winter Garden, this space blends art deco elements with futuristic flair for a see-through look that stands out.

Soaring ceilings and floor-to-sky glass frontage arc into an eye-catching 27-metre glass dome that invites lots of natural light into a flexible space to shape as you please. Stage intimate gigs with a capacity of 1,000 or host larger-than-life celebrations up to 400 using every square metre of our 900 square metres. And at the hottest events of the year, invite your guests to spill up onto the mezzanine or out onto the waterside terrace to catch a breath and reflect on the current.

Our timeless building boasts customisable colour lighting and adaptable glass panels, which can be tailored with branded vinyl to modify visibility, enabling you to transform the space to match any ambiance.

Mirroring the arch of the adjacent Canary Wharf station, The Pelligon is easily accessible via the London Underground, the Dockland Light Railway, and the Elizabeth Line. Made for conferences, awards ceremonies, product launches, parties, and weddings, this is a place at the centre and in plain sight.





the pelligon  
a space to be seen  
thepelligon.com

the pelligon

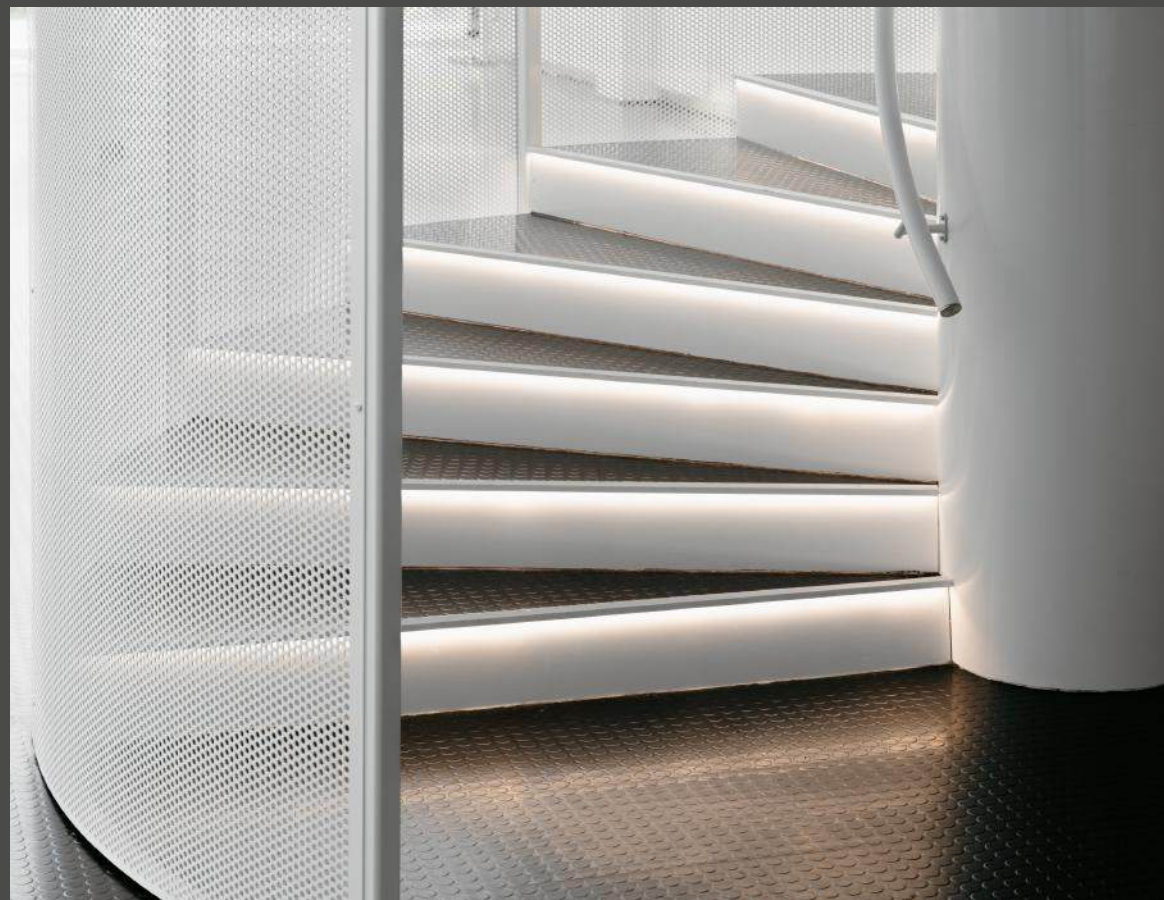






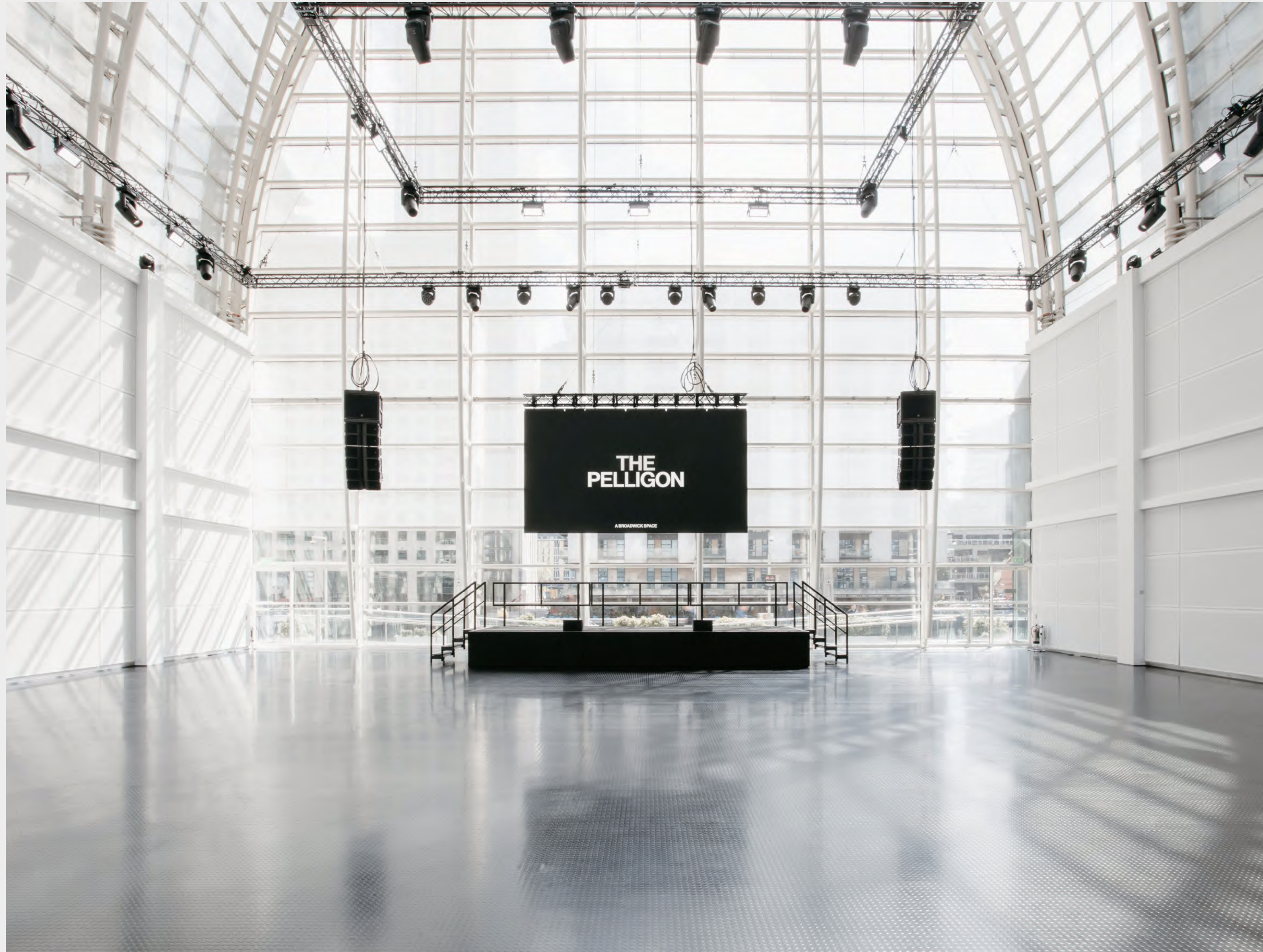
# The place to be seen

Futuristic design. Contemporary details. A 27m dome and floor-to-sky glass frontage. The space to be seen, and to see things differently. The Pelligon in Canary Wharf is a spectacular and versatile London location for waterside celebration and culture.



# and see things differently





# Main Hall

A site to be seen, The Pelligon's Main Hall is situated in a soaring glass dome that reaches a height of 27 metres. Versatile by design, it can flex to welcome up to 750 guests and adapt to accommodate break-out rooms, production spaces, and custom branding, including wrapping the walls and windows. The Main Hall welcomes guests through the Waterside Terrace and offers step-free access from Bank Street, ensuring ease of entry for all attendees.



# The Gallery

With a capacity of up to 250 people, the Gallery is an airy glass mezzanine, overlooking the Main Hall and boasting lofty views of Canary Wharf. With direct access to the kitchen, a suite of bathrooms, and a private lift, the Gallery is ideal for hosting drinks receptions or for creating breakout areas. The glass balcony can also be branded to make the space true to you.







# The Waterside Terrace

A stand-out addition, the Waterside Terrace extends The Pelligon's elegance outdoors. Serving up to 120 guests with views of the Wharf, this open-air platform provides a stunning backdrop for photos and highlight reels as well as space to catch a breath, continue a conversation.



# The Green Room

An expansive private space enveloped in floor-to-ceiling windows, presenting serene water views. Seamlessly connected to the main area, this versatile enclave adapts gracefully to your event's needs—be it as a dressing room, green room, refined lounge, strategic meeting place.

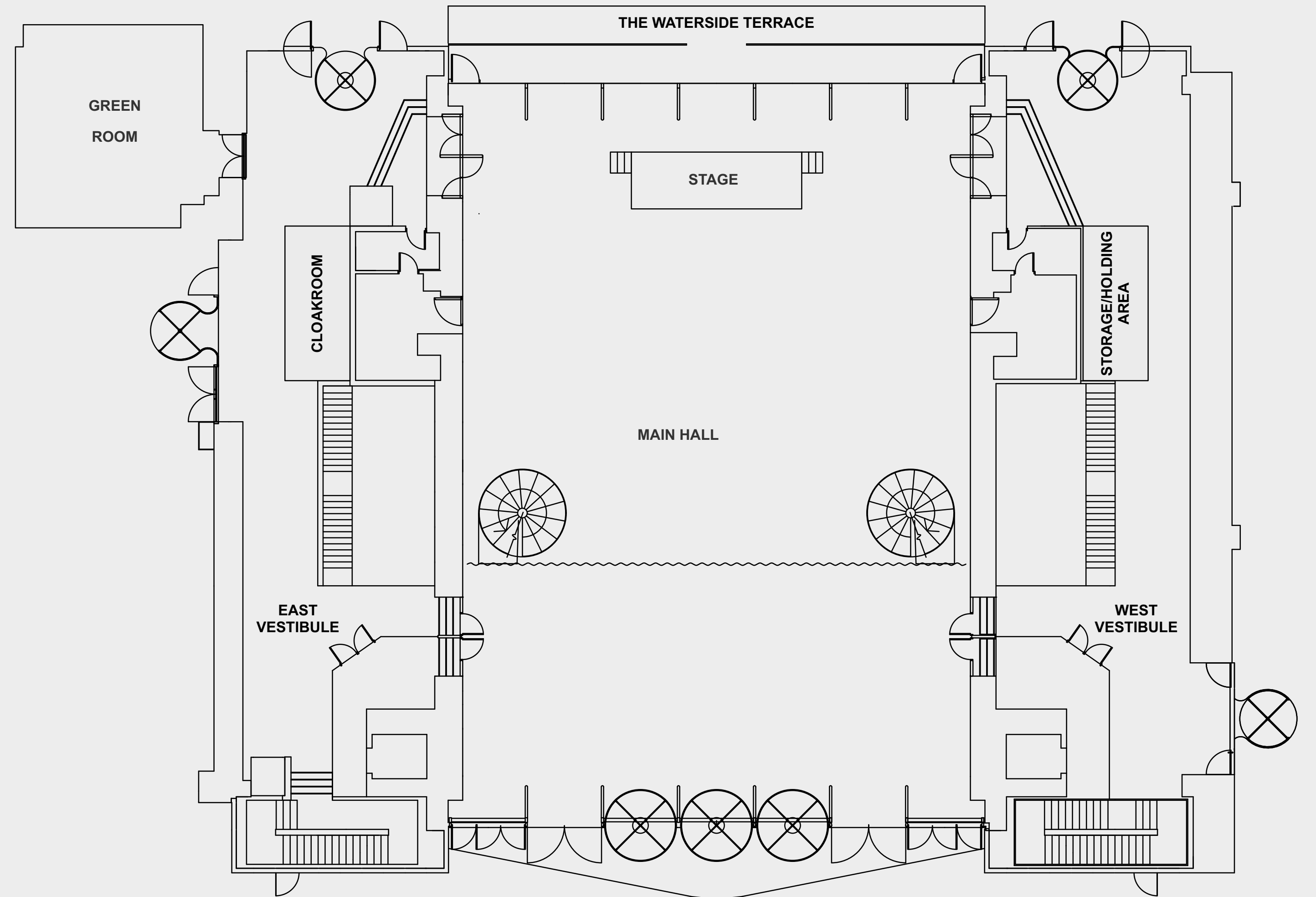








# Ground floor

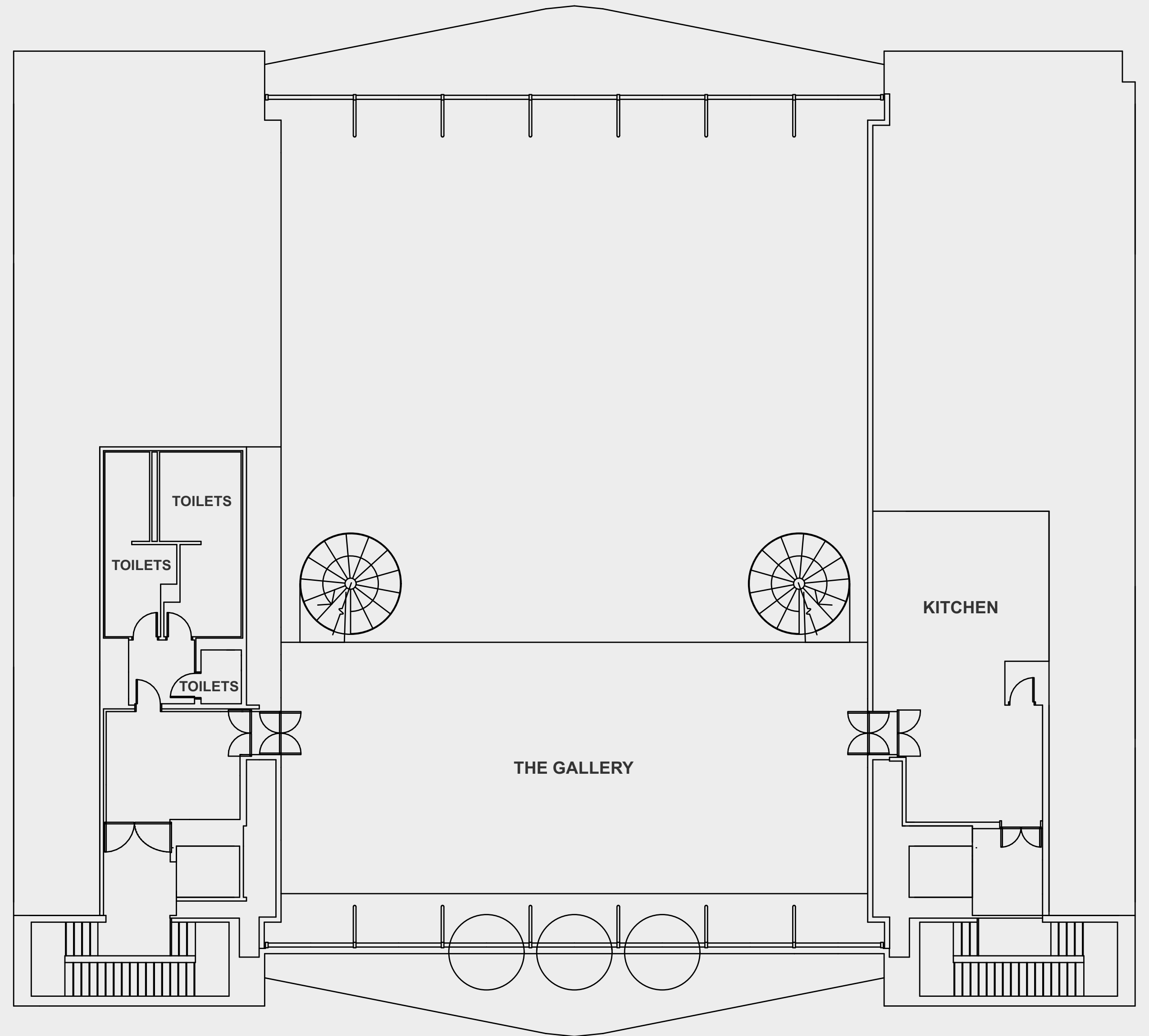


The ground floor at The Pelligon is a symphony of spaces. The Main Hall, bathed in natural light under its grand glass dome, offers versatility and elegance. Steps away, the River Terrace provides a peaceful outdoor haven with captivating views, while the The Green Room, intimate and adaptable, is ideal for a variety of bespoke events.



# First floor

The first floor of The Pelligon blends elegance with purpose. The Gallery, offering panoramic views, is perfect for memorable receptions, VIP areas, breakout rooms and exhibition space.





# Dimensions & capacities

Space	Dimensions				Capacities			
	L(M)	W(M)	H(M)	SQ,M	STANDING	THEATRE	DINNER	CABARET
The Main Hall	30.1	21.5	27	600	750	440	400	288
The Gallery	8.6	21.8	24	187.4	250	130	120	96
The Waterside Terrace	2.6	22.2	-	57.7	120	-	-	-
The Green Room	7.8	7.8	2.9	58	50	40	48	32





AlphaSense  
**DEFY**

AlphaSense  
**DEFY**

AlphaSense  
**DEFY**

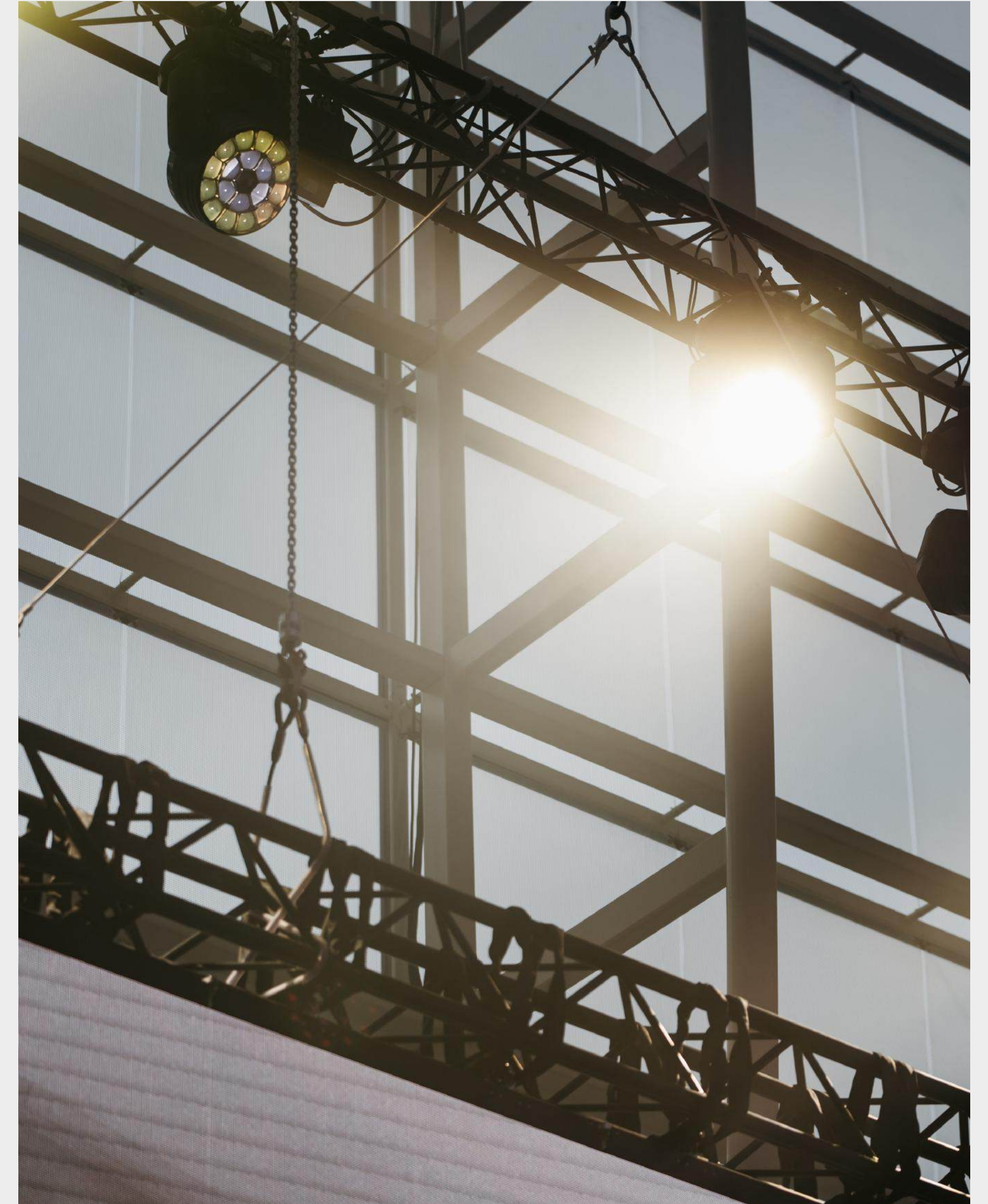


# In-house production

At The Pelligon, the art of event production is mastered by our in-house specialists, Vibration Group. With an intuitive understanding of space and sound, they deliver bespoke designs and technical solutions that resonate.

Renowned for tailor-made event experiences, they craft unique settings with modular stage constructs and provide comprehensive production solutions. Whether it's orchestrating a sound system for crystal-clear presentations or creating an atmosphere with colour-changing lights and wireless uplighters, their expertise is at your disposal.

With each hire, experience the sophistication of our thoughtfully curated conference and dining arrangements, stylish reception decor, and the modern convenience of high-speed 2Mbps free WiFi, per device. The Pelligon is the canvas where your event's possibilities are brought to life with distinction.







# Our neighbourhood

The Pelligon stands proudly at the heart of Canary Wharf, a beacon of elegance amidst the district's modern dynamism. Framed by sweeping vistas of the water and the city skyline, our iconic glass dome is a landmark of sophistication, offering dual-aspect views that gaze upon Jubilee Park and the tranquil waters of South Dock.

The area, celebrated for its towering skyscrapers and progressive architecture, pulses as London's vibrant economic hub. It serves as a cornerstone for the UK's industry leaders, flanked by an array of the city's premier bars and restaurants, reflecting the dynamic fusion of business and leisure that defines Canary Wharf.

Woven into the fabric of this dynamic locale, The Pelligon offers effortless accessibility. Well-connected by the Underground, DLR, and the Elizabeth Line, it stands as a symbol of convenience and connectivity, inviting guests from the city centre and beyond.



#Spain  
Food  
Nation



Wines from Spain  
Annual Tasting  
2024

ICEX

#Spain  
Food  
Nation



Wines from Spain  
Annual Tasting  
2024

ICEX





# the **pelligon**