



the pelligon

WEDDING PACKAGE 2024

Say I do in a venue with a view.

Flooded with natural light by day, The Pelligon transforms into a glittering crystal dome by night that can be dressed to suit the season

Licensed for religious and civil ceremonies, our venue possesses a dedicated bride and groom drop-off outside, a bridal suite or dressing room, and a separate reception space on the mezzanine level. Thanks to our unique location in the centre of Canary Wharf, a variety of transport links and hotel options are at the disposal of your guests. Parking can also be arranged upon request.

And to make sure you only cry tears of joy, our dedicated manager will be on-site to oversee catering – whether Afro-Caribbean banquet or European feast – and work with our experienced in-house production team to organise bespoke lighting and sound.





Inclusions



- Venue Hire access from 12:00 - 01:30
- Access: for suppliers: from 12:00
- Guest arrival: from 17:00
- Bar closure and music to stop: by 23:30
- Guests to depart: by 00:00
- Supplier de-rig: by 01:30
- Pre, Post & Live Event Cleaning
- Venue Manager
- Exclusive Hire of the Main Hall & Gallery
- 2 Dedicated Parking Spaces outside the venue for the Bride & Groom vehicles
- Security for up to 250 guests
- Furniture for up to 250 guests (6ft round tables and limewash chiavari chairs) including delivery, set up, de-rig and collection**
- Cloakroom equipment
- Venue Production Package to include venue video LED screen, in-house PA system and microphone for speeches, suspended moving and architectural lights, venue bar, standard power
- 1 CAD floor plan with one revision
- Venue Duty Technician (up to 12 hours)

*Applies to Saturday only, Licence on a Sunday is until 22:00, guests out by 22:30.

**Linen to be provided by your chosen exclusive caterer

Costs

2024 WEEKEND WEDDING RATES	PRICE
Venue hire - off-peak	from £11,500 + VAT
Venue hire - peak (May - Aug & Dec)	from £13,500 + VAT
Venue hire - bank holiday weekends:	from £15,000 + VAT



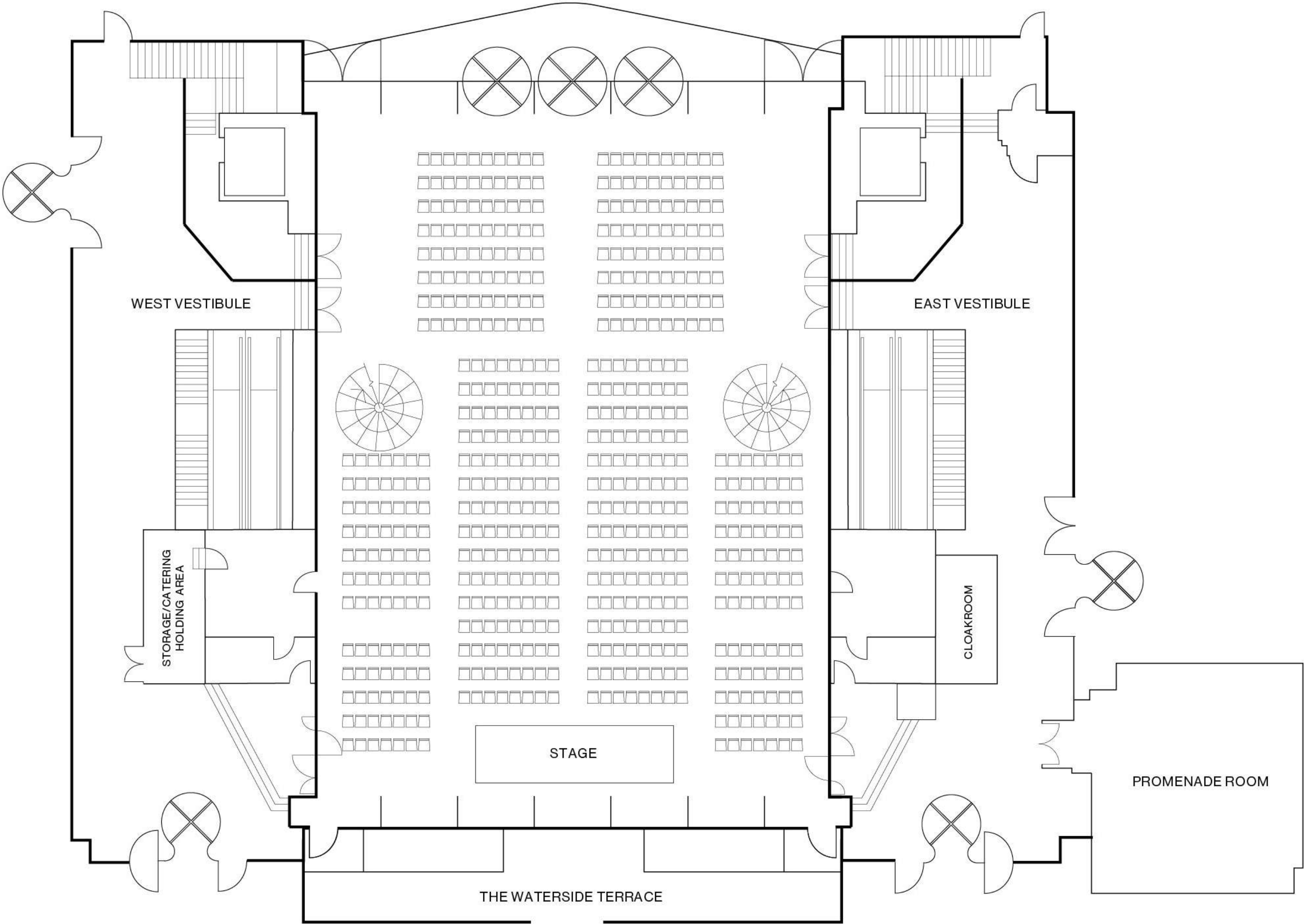
Dimensions & capacities

Space	Dimensions				Capacities		
	L(M)	W(M)	H(M)	SQ,M	STANDING	CEREMONY/ THEATRE	DINNER
The Main Hall	30.1	21.5	27	600	750	568	516
The Gallery	8.6	21.8	24	187.4	250	189	192
The Waterside Terrace	2.6	22.2	-	57.7	120	-	-
The Promenade Room	7.8	7.8	2.9	58	50	40	48



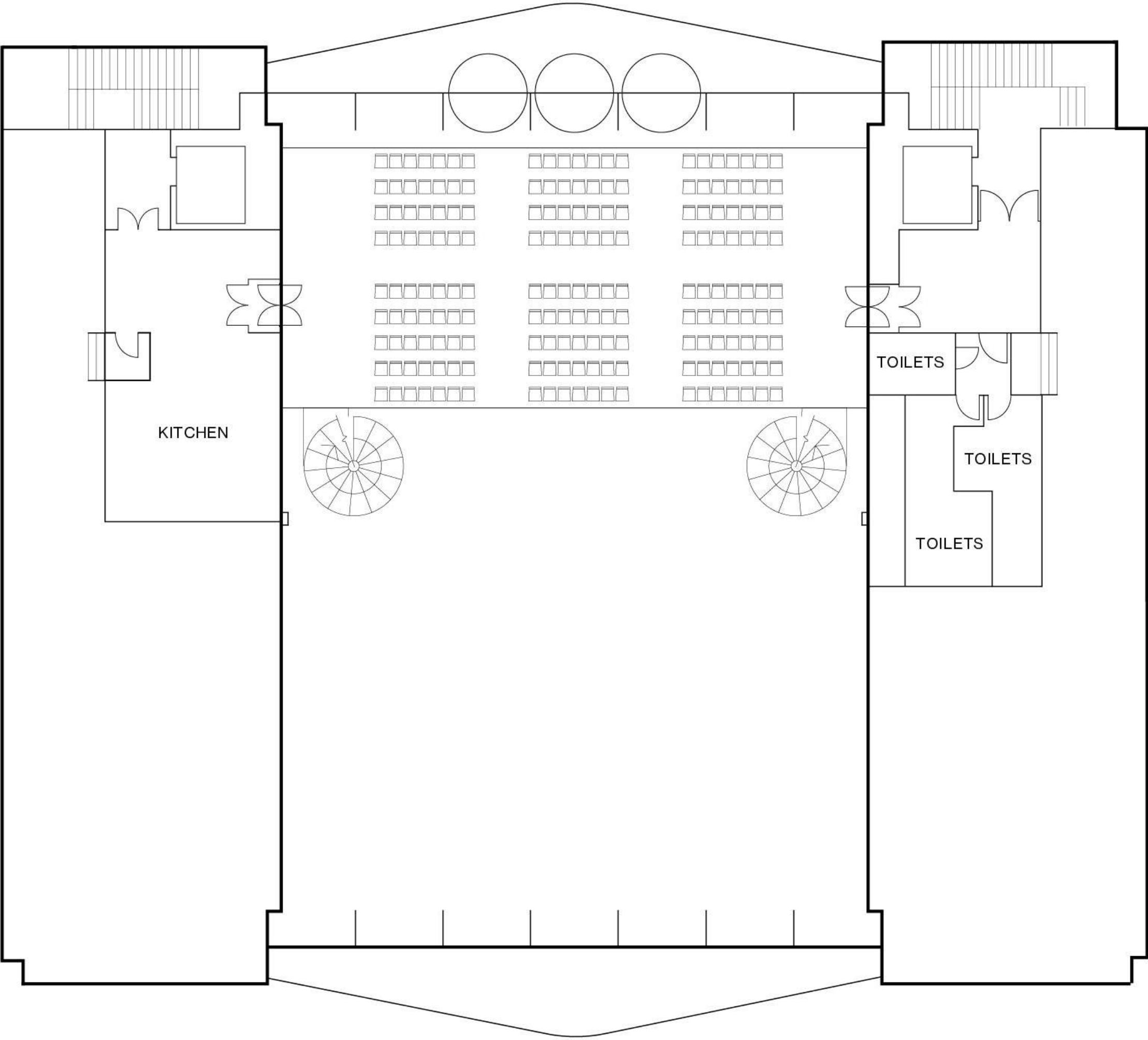
Ceremony

- Ground floor



Max capacity:
568 on theatre style seating

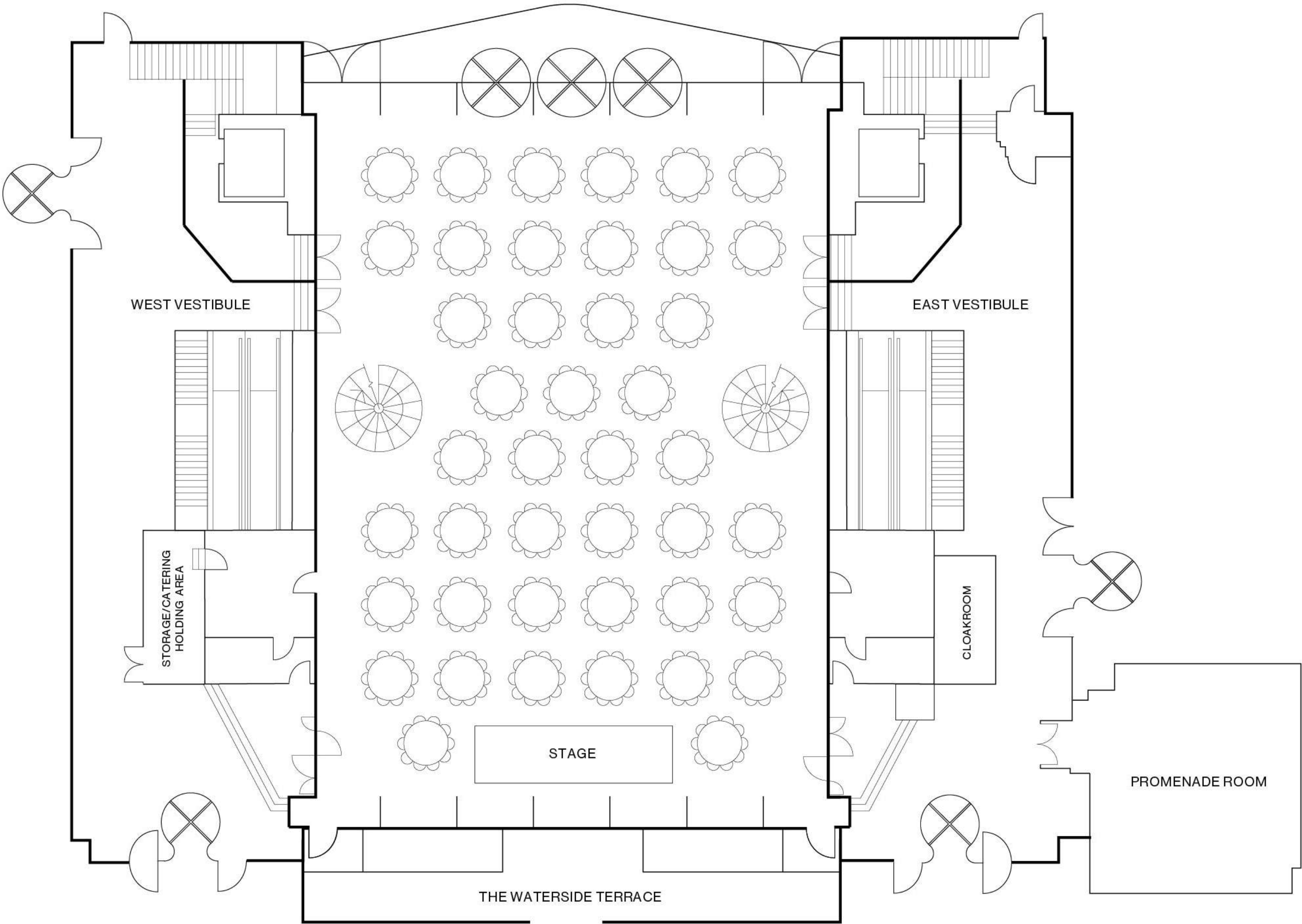
Ceremony - First floor



Max capacity:
189 on theatre style seating

Dinner

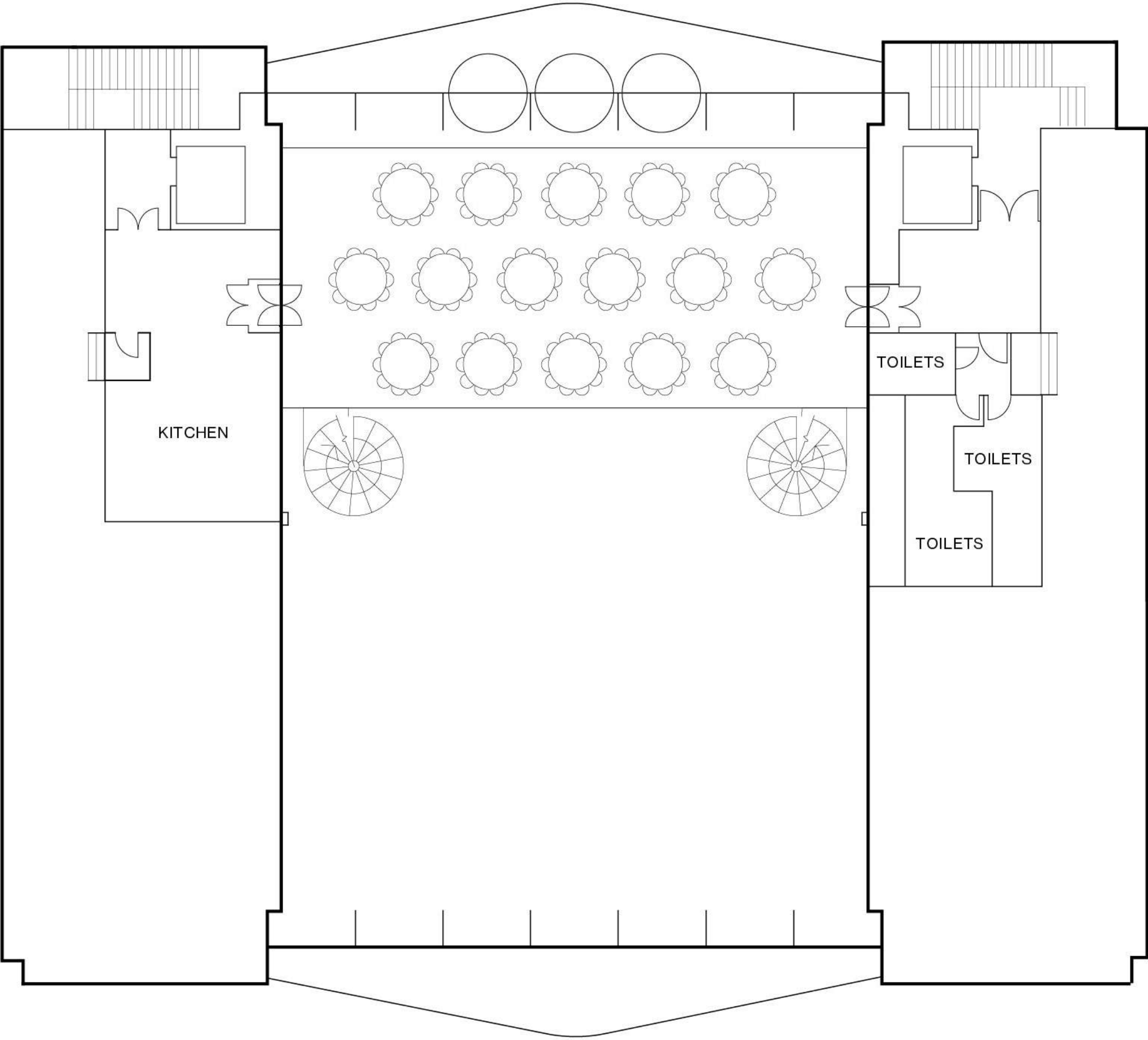
- Ground floor



Max capacity:
516 seated at 6ft round tables

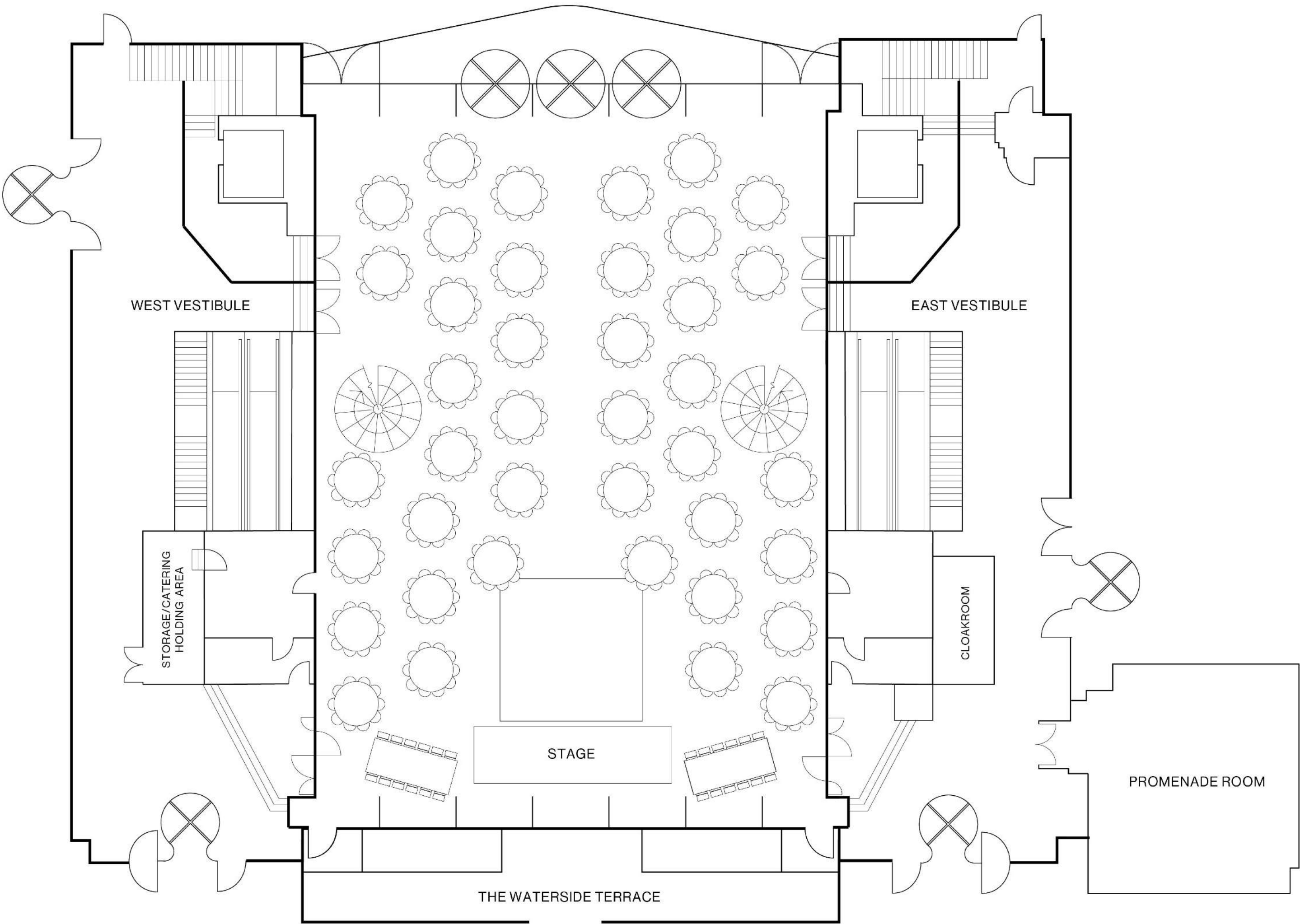
Dinner

- First floor



Max capacity:
192 seated at 6ft round tables

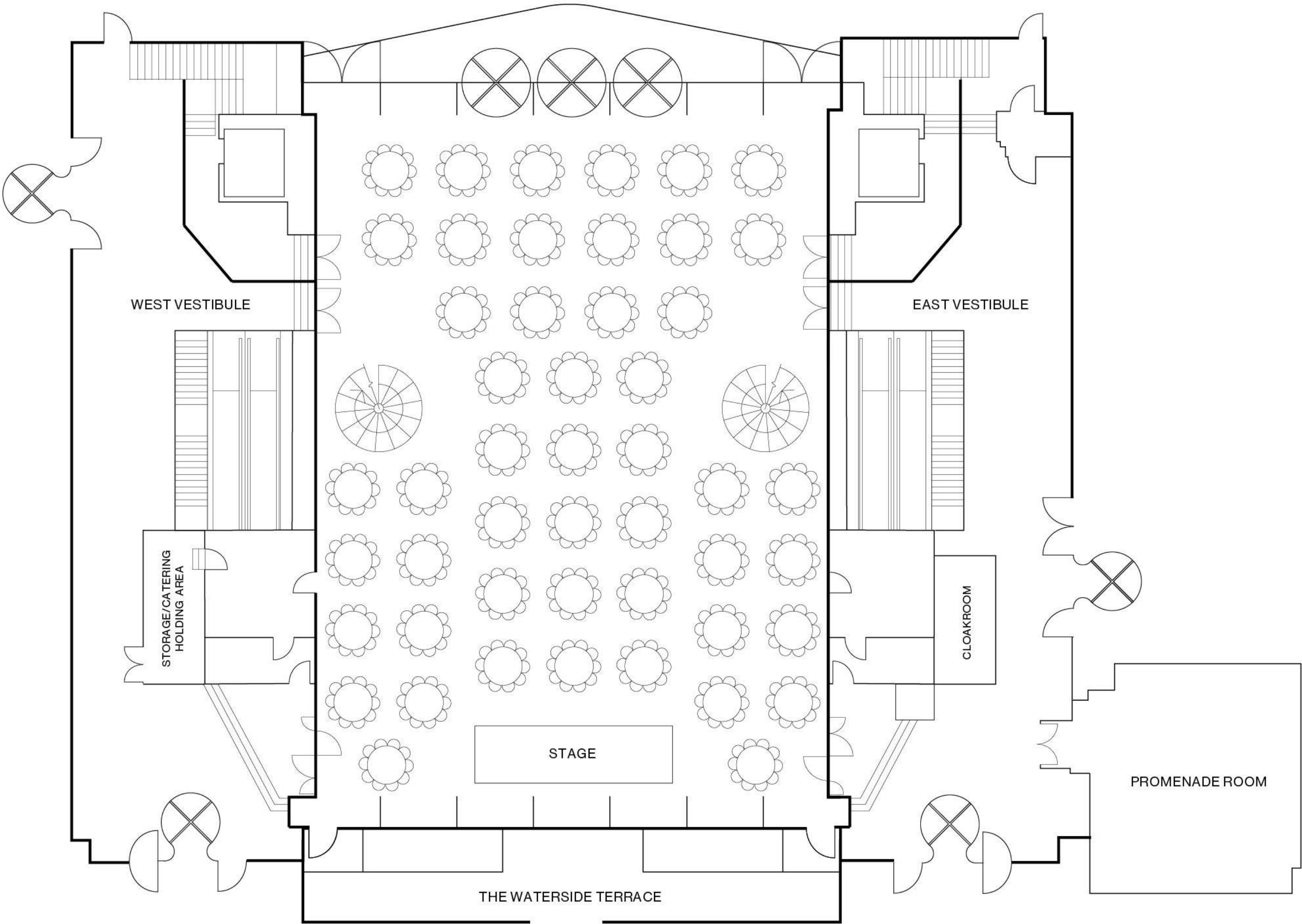
Dinner with dance floor - Ground floor



Max capacity:
480 seated at 6ft round tables and 2 top tables

Dinner

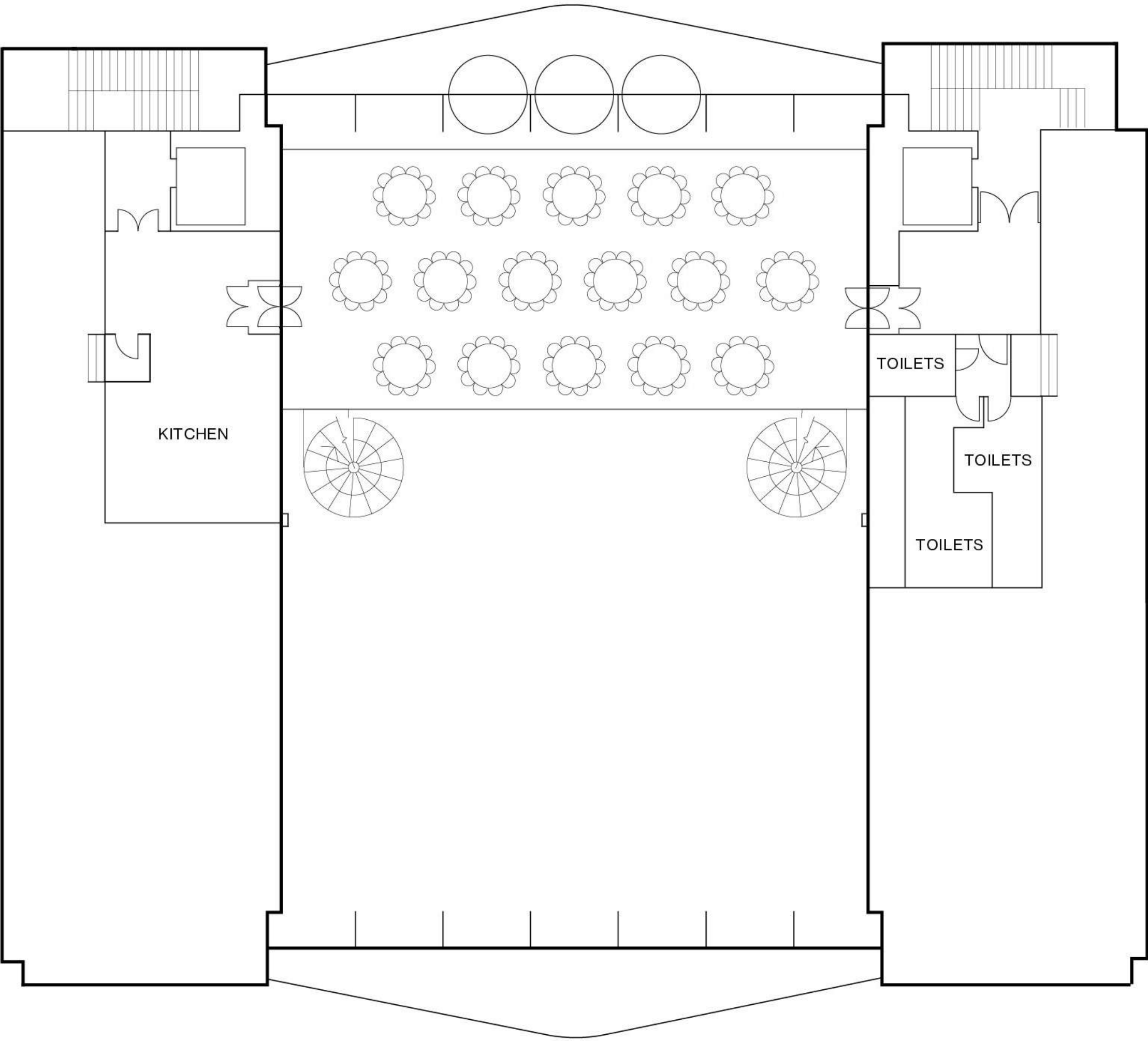
- Ground floor



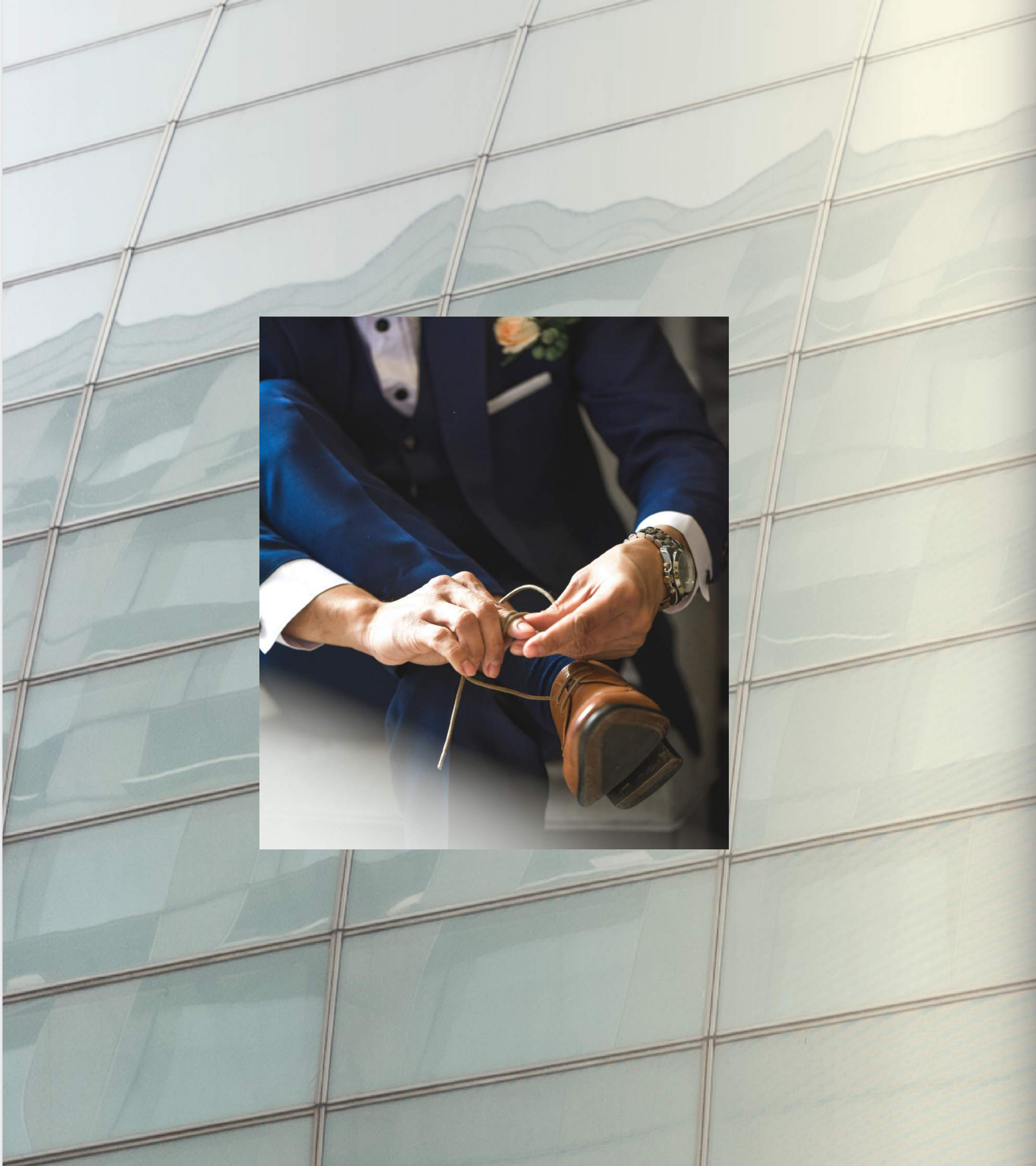
Max capacity:
490 seated at 5ft 6" round tables

Dinner

- First floor



Max capacity:
150 seated at 5ft 6" round tables





Preferred Suppliers

Western Caterers (Mandatory Supplier)	Email	Phone	Website
Alexander & Bjorck	parties@alexanderandbjorck.com	020 3457 1700	alexanderandbjorck.com
Moving Venue	greatfood@movingvenue.com	020 8691 6661	movingvenue.com
Jimmy Garcia Catering	valeria@jimmygarciacatering.com	020 7998 3676	jimmygarciacatering.com
Create	sales@createfood.co.uk	020 8944 4900	createfood.co.uk
Easy Gourmet	info@easygourmetcatering.co.uk	020 7709 0888	easygourmetcatering.co.uk
KERB	hello@kerbevents.com	020 3355 6874	kerbfood.com/kerb-events
Afro-Caribbean Caterers (Mandatory Supplier)	Email	Phone	Website
Easy Gourmet	info@easygourmetcatering.co.uk	020 7709 0888	easygourmetcatering.co.uk
KERB	hello@kerbevents.com	020 3355 6874	kerbfood.com/kerb-events

Preferred Suppliers

Asian Caterers (Mandatory Supplier)	Email	Phone	Website
Sanjay Foods	info@sanjayfoods.com	080 0234 6685	sanjayfoods.com
Laguna	info@lagunarestaurant.com	020 8579 9992	lagunarestaurant.com
Preeti Catering	info@preeticatering.co.uk	020 8606 0303	preeticatering.co.uk

Middle Eastern Caterers (Mandatory Supplier)	Email	Phone	Website
Easy Gourmet	info@easygourmetcatering.co.uk	020 7709 0888	easygourmetcatering.co.uk

Preferred Suppliers

Kosher Caterer (Mandatory Supplier)	Email	Phone	Website
Dvash	events@dvash.co.uk	020 8200 8111	dvash.co.uk
Easy Gourmet	info@easygourmetcatering.co.uk	020 7709 0888	easygourmetcatering.co.uk
AV/Production/Furniture (Exclusive Supplier)	Email	Phone	Website
Vibration Production	hello@vibrationproduction.com	020 8523 3967	vibrationproduction.com
Connectivity/Internet (Mandatory Supplier)	Email	Phone	Website
Noba	nick@noba.co.uk	020 3440 4610	noba.co.uk

Preferred Suppliers

Entertainment (Mandatory Supplier)	Email	Phone	Website
Full Circle	hello@wearefullcircle.co.uk	020 3848 7720	wearefullcircle.co.uk
Jags Klimax	info@jagsklimax.com	079 0092 5686	jagsklimax.com
Flowers (Mandatory Supplier)	Email	Phone	Website
Pinstripes & Peonies	flowers@pinstripesandpeonies.com	020 7720 1245	vibrationproduction.com
The Urban Flower Firm	tuff@theurbanflowerfirm.com	020 7252 3228	theurbanflowerfirm.com
Decor (Mandatory Supplier)	Email	Phone	Website
Bubblegum Balloons	sales@bubblegumballoons.co.uk	012 5262 6697	bubblegumballoons.com
Plush Decor	info@plushdecor.co.uk	079 4948 6748	plushdecor.co.uk



Christopher Mills

FAQS

ARE YOU LICENSED FOR CIVIL CEREMONIES?

Our Main Hall & Gallery are both licensed for Civil Ceremonies. Please note if you wish for the room to be turned around from a ceremony layout to a wedding reception, additional charges apply for staffing and furniture collection/delivery.

DO YOU ALLOW LIVE FLAMES IN THE VENUE?

Use of live flame is not permitted in the venue with the exception of religious ceremonies that require a small live flame. To gain approval, we do require a health & safety risk assessment to ensure the process is safe for all guests and there is an additional charge for a fire warden for the duration of the live flame.

DO YOU ALLOW CONFETTI IN THE VENUE?

Confetti is not permitted in the venue due to the flooring. As an alternative, we suggest the use of real flower petals (excluding lilies).

CAN I EXTEND THE LOAD IN TIME FOR SUPPLIERS?

Yes absolutely, this is an additional cost of £500 + VAT per hour and is subject to availability and approval.

WHAT IS THE COST TO HAVE MORE GUESTS THAN 250 ATTEND OUR SPECIAL DAY?

Additional furniture costs will apply (prices noted further along in the Q&As), and there will be an additional cost for security guards. Please contact a member of the sales team for a quote for the additional guards based on your desired number of guests.

IS THERE ANY PARKING AVAILABLE TO GUESTS?

There are 3 car parks on the estate which are operated by Canary Wharf. The closest car park to East Wintergarden is Jubilee Place Car Park. Parking information can be found here: canarywharf.com/parking

ARE CLOAKROOM STAFF INCLUDED IN THE WEDDING PACKAGE?

The venue includes cloakroom equipment and can provide staffing for an additional cost. 2 members of staff are £500 + VAT based on a 7 hour event. Alternatively, your chosen caterer from our exclusive catering list can provide staff and cloakroom tags for an additional cost.

FAQS

DO YOU HAVE AN ADDITIONAL SPACE I CAN USE FOR ENTERTAINMENT/ CHANGING THROUGHOUT THE DAY?

Yes absolutely, we can offer the Promenade Room which is directly adjacent to the Main Hall. The additional hire for this space would be £1,500 + VAT.

CAN I USE THE WATERSIDE TERRACE FOR MY EVENT?

The Waterside Terrace is your designated smoking area for the event however, if you wish to host a drinks reception in this area we can accommodate up to 120 guests with minimal furniture. Please note an additional cost will apply for additional security.

ARE THERE OPTIONS FOR ADDITIONAL PRODUCTION IN THE VENUE?

We work with an in-house production, Vibration Production, who can provide options for draping, walkways, dancefloors, DJs/entertainment, staging, haze and cool pyros. Please contact them on hello@vibrationproduction.com for a bespoke quote.

CAN I EXTEND THE EVENT TIME BEYOND THE GUEST DEPARTURE AT MIDNIGHT?

Of course. Extensions are subject to approval and availability and is an additional cost of £1,000 + VAT per hour

IS IT POSSIBLE TO HAVE DIFFERENT FURNITURE OR MORE THAN WHAT IS INCLUDED IN THE WEDDING PACKAGE?

Yes absolutely, please find costs below for varying/additional furniture:

- 6ft wooden round tables - £15 + VAT each
- 6ft wooden trestle tables - £15 + VAT each
- Limewash Chiavari Chairs - £5 + VAT each
- Black Chiavari Chairs - £10 + VAT each
- Acrylic Chiavari Chairs - £10 + VAT each
- Ghost Victoria Chairs - £15 + VAT each
- Glass Silver Round Poseur Tables - £30 + VAT each
- Square Black & Marble Poseur Tables - £40 + VAT each

IS THE BAR INCLUDED WITHIN THE HIRE OF THE VENUE?

Yes our venue bar is included within hire. For upgrade options, please contact our production team at hello@vibrationproduction.com for options.

CAN WE USE AN EXTERNAL SUPPLIER FOR DECOR AND THEMING?

Please seek approval with your venue manager prior to booking any external suppliers to avoid any disappointment.



HOW MUCH IS THE DEPOSIT TO SECURE MY EVENT DATE?

We ask for a £1,000 + VAT deposit to be paid upon signing your booking contract

WHAT IS THE COST FOR ADDITIONAL SECURITY?

- Additional guests (live event only): £30 + VAT per hour per additional 100 guests
- Load in extension (post 06:00 and pre midnight): £90 + VAT per hour
- Load out extension (post midnight): £150 + VAT per hour
- Live event extension (pre midnight): £250 + VAT per hour (all subject to availability and approval)

WHAT IS THE FIRE WARDEN COST?

£30 + VAT per hour (min of 6 hours)

the **pelligon**

43 BANK STREET

LONDON

E14 5NX

UNITED KINGDOM

[THEPELLIGON.COM](https://thepelligon.com)